

Nrf2 Rabbit mAb

Catalog No: #58606

Package Size: #58606-1 50ul #58606-2 100ul

Orders: order@signalwayantibody.comSupport: tech@signalwayantibody.com

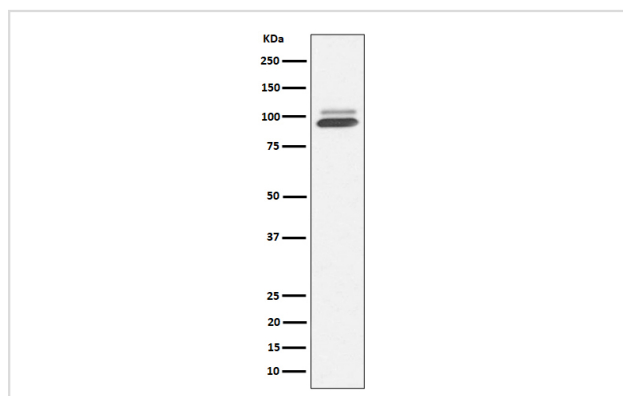
Description

| | |
|-----------------------|---|
| Product Name | Nrf2 Rabbit mAb |
| Host Species | Rabbit |
| Clonality | Monoclonal |
| Isotype | Rabbit IgG |
| Purification | Affinity-chromatography |
| Applications | WB;IHC;ICC/IF;IP;CHIP |
| Species Reactivity | Human;Mouse |
| Specificity | Nrf2 Antibody detects endogenous levels of total Nrf2 |
| Immunogen Description | A synthesized peptide derived from human Nrf2 |
| Conjugates | Unconjugated |
| Target Name | NFE2L2 |
| Other Names | Nuclear factor erythroid 2-related factor 2; Nuclear factor, erythroid derived 2, like 2; NFE2-related factor 2; NRF2; NF-E2-related factor 2; NFE2L2; NF2L2; HEBP1 |
| Accession No. | Q16236 |
| Formulation | Rabbit IgG in phosphate buffered saline , pH 7.4, 150mM NaCl, 0.02% sodium azide and 50% glycerol. |
| Storage | Store at +4ℳ C short term. Store at -20ℳ C long term. Avoid freeze / thaw cycle. |

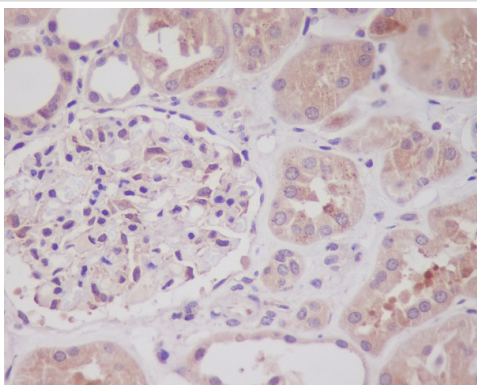
Application Details

WB 1:500~1:2000 IHC 1:50~1:200 ICC/IF 1:100~1:500 IP 1:50

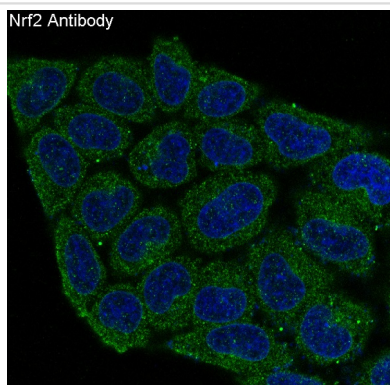
Images



Western blot analysis of Nrf2 expression in 293T cell treated with arsenite.



Immunohistochemical analysis of paraffin-embedded human kidney, using Nrf2 Antibody.



Immunofluorescent analysis of HeLa cells, using Nrf2 Antibody.

Note: This product is for in vitro research use only and is not intended for use in humans or animals.