

Src (Phospho-Tyr529) Rabbit mAb

Catalog No: #60291



Package Size: #60291-1 50ul #60291-2 100ul

Orders: order@signalwayantibody.comSupport: tech@signalwayantibody.com

Description

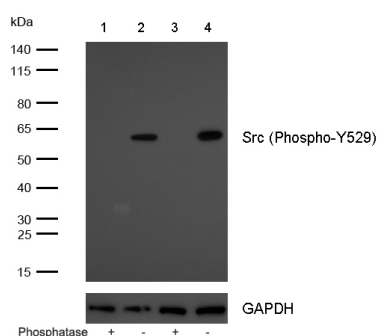
Product Name	Src (Phospho-Tyr529) Rabbit mAb
Host Species	Recombinant Rabbit
Clonality	Monoclonal
Isotype	Rabbit IgG
Purification	Affinity-chromatography
Applications	WB IHC ICC/IF
Species Reactivity	Human;Mouse;Rat
Immunogen Description	A synthesized peptide derived from human Phospho-Src (Y529)
Conjugates	Unconjugated
Calculated MW	60kDa
SDS-PAGE MW	60kDa
Formulation	Rabbit IgG in phosphate buffered saline , pH 7.4, 150mM NaCl, 0.02% sodium azide and 50% glycerol.
Storage	Store at +4°C short term. Store at -20°C long term. Avoid freeze / thaw cycle.

Application Details

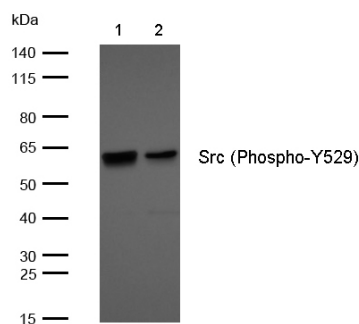
WB 1:500~1:2000

ICC/IF 1:50~1:200

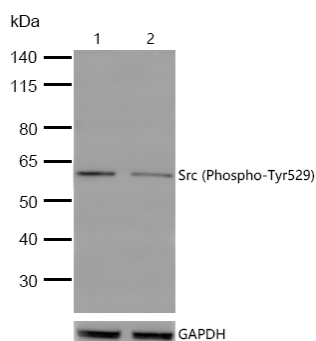
Images



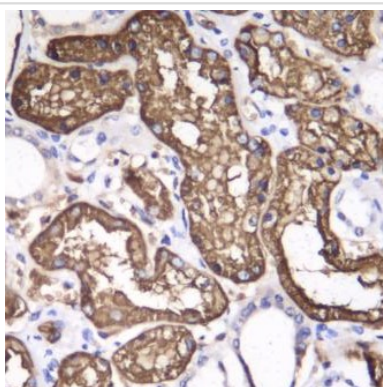
All lanes : Src (Phospho-Y529) Rabbit mAb at 1/1000 dilution
 Lane 1 : A431 treated with Lambda Protein Phosphatase for 1 hour whole cell Lane 2 : A431 whole cell lysates Lane 3 : 293 treated with Lambda Protein Phosphatase for 1 hour whole cell Lane 4 : 293 whole cell lysates Lysates/proteins at 20 µg per lane. Secondary All lanes : Goat Anti-Rabbit IgG H&L (HRP) at 1/20000 dilution Predicted band size: 60 kDa Observed band size: 60 kDa Exposure time: 7 seconds



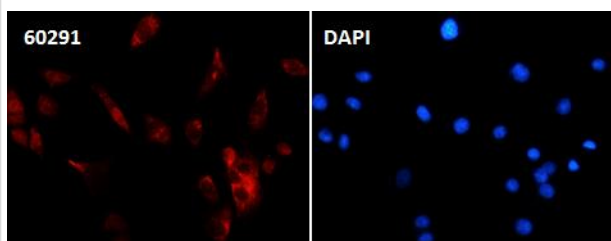
All lanes : Src (Phospho-Y529) Rabbit mAb at 1/1000 dilution
 Lane 1 : Mouse heart lysates Lane 2 : Rat heart lysates
 Lysates/proteins at 20 µg per lane. Secondary : Goat Anti-Rabbit IgG H&L (HRP) at 1/20000 dilution
 Predicted band size: 60 kDa Observed band size: 60 kDa
 Exposure time: 9 seconds



All lanes: Src (Phospho-Tyr529) Rabbit mAb at 1/1k dilution
 Lane 1 : Wild-type A549 cell lysate Lane 2 : Src (Phospho-Tyr529) Rabbit mAb knockdown A549 cell lysate
 Lysates/proteins at 20 µg per lane.



Formalin-fixed, paraffin-embedded human kidney tissue stained for Src (Phospho-Y529) using 60291 at 1/100 dilution in immunohistochemical analysis.



Immunocytochemistry/ Immunofluorescence Src (Phospho-Y529) antibody (60291)
 ICC/IF staining of Src (Phospho-Y529) in HeLa cells. Cells were fixed with 4% Paraformaldehyde permeabilized with 0.1% Triton X-100.

Samples were incubated with 60291 at a working dilution of 1/100. The secondary antibody was Alexa FluorB 488 goat anti rabbit, used at a dilution of 1/500.

Nuclei were counterstained with DAPI.

Background

Non-receptor protein tyrosine kinase that plays pivotal roles in numerous cellular processes such as proliferation, migration, and transformation. In concert with PTK2B, plays an important role in osteoclastic bone resorption. Both the formation of a SRC-PTK2B complex, and SRC kinase activity are necessary for this function.

Published Papers

Xiaoyu Chen;Chengxia Shu;Wenqiang Li;Qiangqiang Hou;Guangmei Luo;Kexin Yang;Xiaoxing Wu et al., Discovery of a Novel Src Homology-2 Domain Containing Protein Tyrosine Phosphatase-2 (SHP2) and Cyclin-Dependent Kinase 4 (CDK4) Dual Inhibitor for the Treatment of Triple-Negative Breast Cancer, , (2022)

PMID:

Note: This product is for in vitro research use only and is not intended for use in humans or animals.