

Histone H3 (Citrulline Arg17) Rabbit mAb

Catalog No: #60311



Package Size: #60311-1 50ul #60311-2 100ul

Orders: order@signalwayantibody.com

Support: tech@signalwayantibody.com

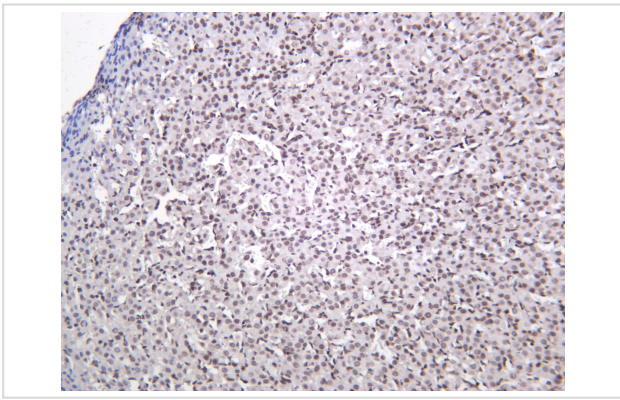
Description

Product Name	Histone H3 (Citrulline Arg17) Rabbit mAb
Host Species	Rabbit
Clonality	Monoclonal
Isotype	IgG,Kappa
Purification	Protein A
Applications	WB;IF;IP;ELISA
Species Reactivity	Human;Mouse;Rat
Specificity	Histone H3 (Citrulline Arg17) Antibody detects endogenous levels of Histone H3 protein only when Citrulline at Arg17. The name of modified sites may be influenced by many factors; such as species (the modified site was not originally found in human samples) and the change of protein sequence (the previous protein sequence is incomplete; and the protein sequence may be prolonged with the development of protein sequencing technology). When naming; we will use the "numbers" in historical reference to keep the sites consistent with the reports. The antibody binds to the following modification sequence (lowercase letters are modification sites):KApRK
Conjugates	Unconjugated
Target Name	Histone H3;Histone H3 Citrullination Arg17
Modification	Citrullination
Other Names	HIST1H3A;H3FA;HIST1H3B;H3FL;HIST1H3C;H3FC;HIST1H3D;H3FB;HIST1H3E;H3FD;HIST1H3F;H3FI;HIST1H3G;H3FH;HIST1H3H;H3FK;HIST1H3I;H3FF;HIST1H3J;H3FJ;Histone H3.1;Histone H3/a;Histone H3/b;Histone H3/c;Histone H3/d;Histone H3/f;Histone H3/h;Histone H3/i;Histone H3/j;Histone H3/k;Histone H3/l;HIST2H3A;HIST2H3C;H3F2;H3FM;HIST2H3D;Histone H3.2;Histone H3/m;Histone H3/o;H3F3A;H3.3A;H3F3;PP781;H3F3B;H3.3B;Histone H3.3
Accession No.	P68431;Q71DI3;P84243
Calculated MW	15kDa
SDS-PAGE MW	15kDa
Formulation	PBS; 50% glycerol; 0.05% Proclin 300; 0.05%BSA
Storage	-15°C to -25°C/1 year(Do not lower than -25°C)

Application Details

WB 1:2000-1:10000;IF 1:200-1:1000;ELISA 1:5000-1:20000;IP 1:50-1:200;

Images



Immunohistochemical analysis of paraffin-embedded Rat ovarian. EDTA pH 9.0 was used for antibody retrieval(>98°C,20min). 3,Secondary antibody was diluted at 1:200.

Note: This product is for in vitro research use only and is not intended for use in humans or animals.