

## Calmodulin 1/2/3 Rabbit mAb

Catalog No: #60315



Package Size: #60315-1 50ul #60315-2 100ul

Orders: order@signalwayantibody.com

Support: tech@signalwayantibody.com

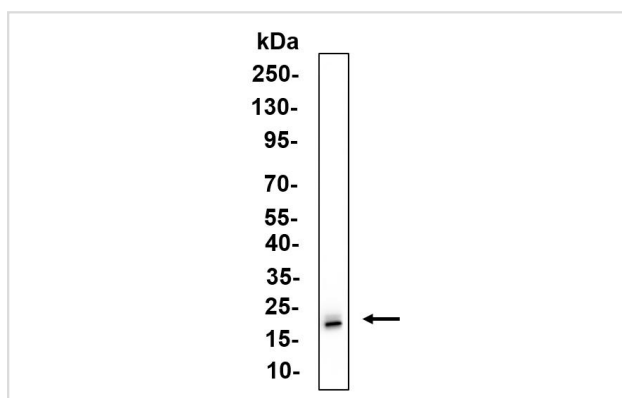
## Description

Product Name	Calmodulin 1/2/3 Rabbit mAb
Host Species	Rabbit
Clonality	Monoclonal
Isotype	IgG,Kappa
Purification	Protein A
Applications	WB;IHC;IF;IP;ELISA
Species Reactivity	Human;Mouse;Rat
Specificity	Endogenous
Conjugates	Unconjugated
Target Name	Calmodulin 1/2/3
Modification	Unmodified
Other Names	CALM1;CALM;CAM;CAM1;CALM2;CAM2;CAMB;CALM3;CALML2;CAM3;CAMC;CAMIII;Calmodulin;CaM
Accession No.	P0DP23;P0DP24;P0DP25
Calculated MW	17kDa
SDS-PAGE MW	18kDa
Formulation	PBS; 50% glycerol; 0.05% Proclin 300; 0.05%BSA
Storage	-15°C to -25°C/1 year(Do not lower than -25°C)

## Application Details

IHC 1:2000-1:10000;WB 1:2000-1:10000;IF 1:200-1:1000;ELISA 1:5000-1:20000;IP 1:50-1:200;

## Images



Western Blot analysis using HCT-116 cell lysate, Proteins were separated by 4-20% SDS-PAGE.

Note: This product is for in vitro research use only and is not intended for use in humans or animals.