

## APC anti-human CD10

Catalog No: #FC0012



Package Size: #FC0012-1 25Tests #FC0012-2 100Tests

Orders: [order@signalwayantibody.com](mailto:order@signalwayantibody.com)Support: [tech@signalwayantibody.com](mailto:tech@signalwayantibody.com)

## Description

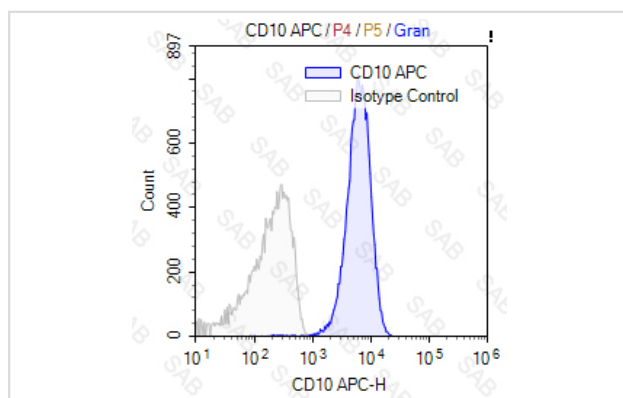
Product Name	APC anti-human CD10
Host Species	mouse
Clonality	Monoclonal
Clone No.	s-CB-CALLA
Isotype	mouse IgG2b, $\kappa$
Applications	FC
Species Reactivity	human
Conjugates	APC
Target Name	CD10
Formulation	0.2%BSA and 0.1%Proclin 300 Phosphate-buffered solution,PH7.2-7.4
Storage	Store at 4°C. DO NOT FREEZE. LIGHT SENSITIVE MATERIAL.

## Application Details

Test: 5  $\mu$ l/Test

Notice: This reagent has been pre-diluted for use at recommended volume per test in flow cytometry analysis. Typically,  $1 \times 10^6$  cells can be tested per experiment. Refer to the detailed scenario as you test.

## Images



Human peripheral blood granulocytes stained with APC anti-human CD10 (colored histogram) or APC mouse IgG2b  $\kappa$  (gray histogram)

Note: This product is for in vitro research use only and is not intended for use in humans or animals.