

Histone H2B(Acetyl-Lys20) Rabbit Polyclonal Antibody

Catalog No: #HW088



Package Size: #HW088-1 50ul #HW088-2 100ul

Orders: order@signalwayantibody.comSupport: tech@signalwayantibody.com

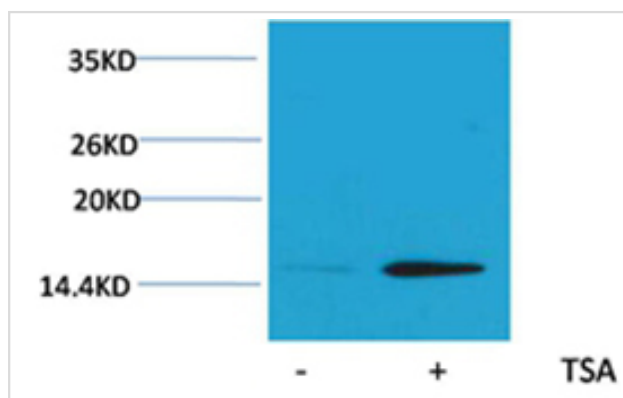
Description

Product Name	Histone H2B(Acetyl-Lys20) Rabbit Polyclonal Antibody
Host Species	Rabbit
Clonality	Polyclonal
Purification	Affinity purification using immunogen.
Applications	WB
Species Reactivity	Human;Mouse;Rat
Specificity	The Histone H2B(Acetyl Lys20) Rabbit Polyclonal Antibody detects endogenous Histone H2B(Acetyl Lys20) protein.
Immunogen Type	peptide
Immunogen Description	A synthetic acetylated peptide corresponding to residues surrounding Lys20 of human histone H2B.
Conjugates	Unconjugated
Target Name	Histone H2B(Acetyl-Lys20)
Modification	Acetyl
Other Names	H2B GL105 antibody; H2B.1 antibody; Histone H2B type 1B antibody; HIST1H2BB antibody
Accession No.	Swiss-Prot#:P33778
SDS-PAGE MW	14kd
Concentration	1.0mg/ml
Formulation	Rabbit Antiserum, containing 0.02% sodium azide as Preservative and 50% Glycerol.
Storage	Store at -20°C

Application Details

Western blotting: 1:1000~1:2000

Images



Western blot analysis of extracts from HeLa cells, untreated (-) or treated with TSA (1 μ M, 18 hr; +), using #HW088 diluted at 1:2,000.

Background

Histone H2B is one of the 5 main histone proteins involved in the structure of chromatin in eukaryotic cells.

Note: This product is for in vitro research use only and is not intended for use in humans or animals.