

# KBA.62 (Melanoma Associated Antigen) Antibody

Catalog No: #P1009

Package Size: #P1009 0.1m

Orders: [order@signalwayantibody.com](mailto:order@signalwayantibody.com)Support: [tech@signalwayantibody.com](mailto:tech@signalwayantibody.com)

## Description

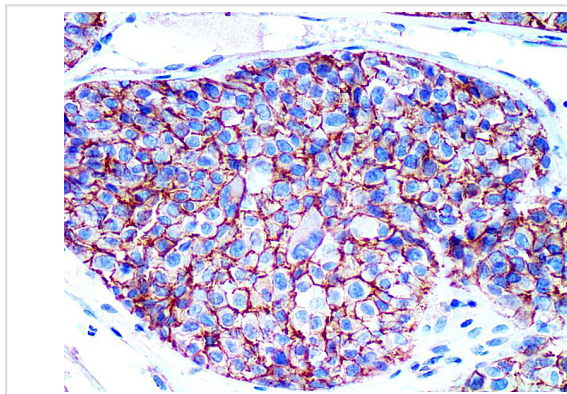
Product Name	KBA.62 (Melanoma Associated Antigen) Antibody
Host Species	Mouse
Clonality	Monoclonal
Clone No.	IHC062
Applications	IHC
Species Reactivity	Human
Formulation	Tris Buffer, pH 7.3 - 7.7, with 1% BSA and
Storage	Store at 2-8C. Do not freeze.

## Application Details

Recommended

working dilution range:1:100 - 1:200

## Images



KBA.62 (Melanoma Associated Antigen) Antibody (P1009) on Melanoma

## Product Description

KBA.62, also known as Melanoma Associated Antigen, is used to detect an antigen present in melanocytic tumors, such as melanomas, due to its proven sensitivity and specificity. The antibody can also be used to distinguish between junctional nevus and intradermal nevus cells, and fetal melanocytes versus normal adult melanocytes. Studies have shown KBA.62 to be highly useful in differentiating between metastatic amelanotic melanoma and a number of poorly differentiated carcinomas, large cell lymphomas, sarcomas, and spindle cell carcinomas.

## References

- Kaufmann O, et al. Mod Pathol. 1998; 11:740-6.
- Gown AM, et al. A J Path. 1986; 123:195.
- Kocan P, et al. Cesk Patol. 2004; 40:50-6.
- Pags C, et al. Hum Pathol. 2008; 39:1136-1142.

Wick MR, et al. Arch Path Lab. 1988; 112:616-20.  
Cohen-Knafo E, et al. J Clin Pathol. 1995; 48:826-31.  
Leong ASY, et al. Surg Path. 1989; 2:137.

---

Note: This product is for in vitro research use only and is not intended for use in humans or animals.