

## Annexin A1 Antibody

Catalog No: #P1024

Package Size: #P1024 0.1m

Orders: [order@signalwayantibody.com](mailto:order@signalwayantibody.com)Support: [tech@signalwayantibody.com](mailto:tech@signalwayantibody.com)

## Description

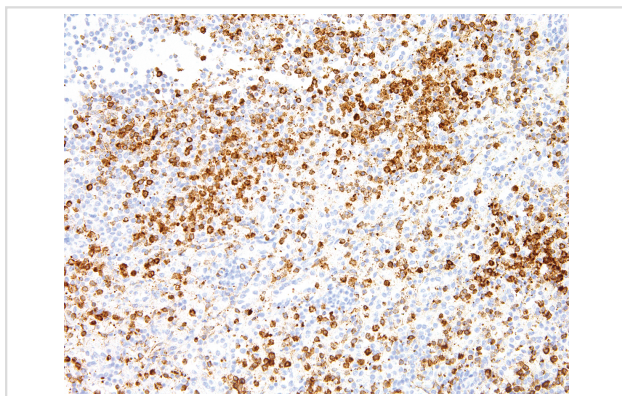
Product Name	Annexin A1 Antibody
Host Species	Mouse
Clonality	Monoclonal
Clone No.	IHC512
Applications	IHC
Species Reactivity	Human
Formulation	Tris Buffer, pH 7.3 - 7.7, with 1% BSA and
Storage	Store at 2-8C. Do not freeze.

## Application Details

Recommended

working dilution range:1:100 - 1:200

## Images



Annexin A1 Antibody (P1024) on Spleen

## Product Description

Annexin A1 (ANXA1) is a membrane protein that plays a role in innate and adaptive immunity by controlling the biosynthesis of inflammation, prostaglandins, and leukotriene mediators. This target is overexpressed in 97% of all samples from patients with hairy cell leukemia, and is absent in other B-cell lymphomas. High ANXA1 expression is frequently associated with advanced stage esophageal and esophagogastric junction adenocarcinoma, and is also linked to advanced and metastatic disease states.

## References

Tiacci E, et al. N Eng J Med. 2011; 364:2305-2315.

Wang K, et al. Clin Cancer Res. 2006; 12:4598-4604.

---

Note: This product is for in vitro research use only and is not intended for use in humans or animals.