

MSH6 Antibody

Catalog No: #P1031

Package Size: #P1031 0.1m

Orders: order@signalwayantibody.comSupport: tech@signalwayantibody.com

Description

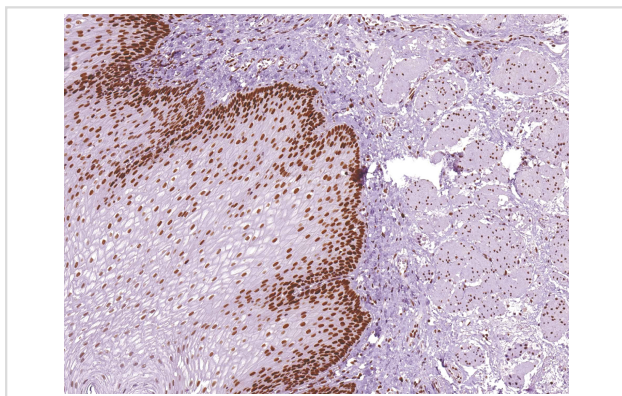
Product Name	MSH6 Antibody
Host Species	Mouse
Clonality	Monoclonal
Clone No.	IHC006
Applications	IHC
Species Reactivity	Human
Formulation	Tris Buffer, pH 7.3 - 7.7, with 1% BSA and
Storage	Store at 2-8C. Do not freeze.

Application Details

Recommended

working dilution range:1:100 - 1:200

Images



MSH6 (P1031) on Esophagus

Product Description

MutS Homolog 6 (MSH6) is a protein involved in the mismatch-repair pathway. This protein is commonly associated with hereditary non-polyposis colorectal cancer, and mutations in this gene are correlated with the development of sporadic colorectal carcinoma. Studies have shown that mutations in MSH6, when co-indicated with mutations in MSH1 and MSH2, contribute to the development of sporadic colorectal carcinoma. Use of Anti-MSH6 is optimized when paired in an IHC panel with MSH2, MLH1, and PMS2.

References

- Lagerstedt Robinson K, et al. J Natl Cancer Inst. 2007; 99:291-9.
Niessen RC, et al. Gut. 2006; 55:1781-8.
Hansen TP, et al. Appl Immunohistochem Mol Morphol. 2006; 14:115-21.
Lawes DA, et al. Br J Cancer. 2005; 93:472-7.

Stormorken AT, et al. J Clin Oncol. 2005; 23:4705-12.
Rigau V, et al. Arch Pathol Lab Med. 2003; 127:694-700.
Renkonen E, et al. J Clin Oncol. 2003; 21:3629-37.

Note: This product is for in vitro research use only and is not intended for use in humans or animals.