

CD45(LCA) Antibody

Catalog No: #P1036

Package Size: #P1036 0.1m

Orders: order@signalwayantibody.comSupport: tech@signalwayantibody.com

Description

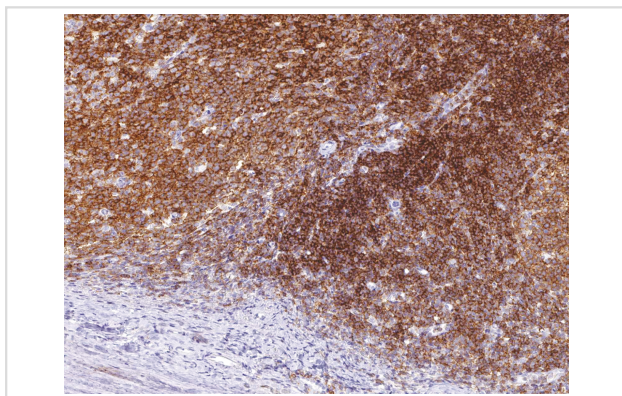
Product Name	CD45(LCA) Antibody
Host Species	Mouse
Clonality	Monoclonal
Clone No.	IHC045
Applications	IHC
Species Reactivity	Human
Formulation	Tris Buffer, pH 7.3 - 7.7, with 1% BSA and
Storage	Store at 2-8C. Do not freeze.

Application Details

Recommended

working dilution range:1:100 - 1:200

Images



CD45 (LCA) [P1036] on Tonsil

Product Description

Cluster of differentiation 45 (CD45), also known as leukocyte common antigen (LCA), is a member of the protein tyrosine phosphatase (PTPase) family which is known to regulate a variety of cellular processes including cell growth, differentiation, the mitotic cycle, and oncogenic transformation. CD45 is expressed in most nucleated cells of hematopoietic origin, and is an essential regulator of T and B cell antigen receptor signalling. Anti-CD45 positively stains the majority of lymphoid neoplasms, and is highly indicative of lymphoid origin. However, an absence of CD45 does not rule out lymphoid tumors, as certain types of neoplasms lack CD45, such as Hodgkins lymphoma, some T-cell lymphomas, and some leukemias.

References

- Kurtin PJ, et al. Hum Pathol. 1985; 16:353-65.
Michels S, et al. Arch Pathol Lab Med. 1987; 111:1035-39.
Muzaffar S, et al. JPMMA J Pak Med Assoc. 1997; 47:106-9.

Note: This product is for in vitro research use only and is not intended for use in humans or animals.